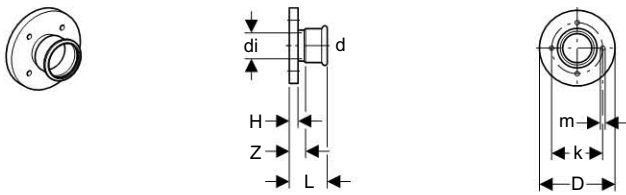


Flanges

Geberit Mapress flange PN 10/16, with pressing socket



Application Purpose

- For sanitary and industrial applications
- For heating installations

Characteristics

- With pressing socket
- Leaky if unpressed
- With pressing indicator

Product Details

Product material	CrNiMo steel 1.4401 (DIN EN 10088)
------------------	------------------------------------

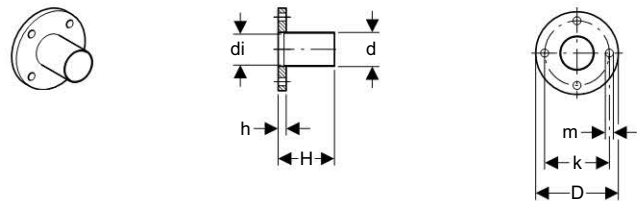
Scope Of Delivery

- Seal ring CIIR black
- Excluded: Set of bolts for flange
- Excluded: Flange gasket

Ordering Information

Article no.	dØ [mm]	diØ [mm]	D [cm]	k [cm]	m [cm]	H [cm]	L [cm]	Z [cm]	PN [bar]
33702	15	13	9,5	6,5	1,4	1,1	5,5	3,6	10 / 16
33703	18	16	9,5	6,5	1,4	1,1	5,7	3,7	10 / 16
33704	22	19,6	10,5	7,5	1,4	1,2	5,9	3,8	10 / 16
33705	28	25,6	11,5	8,5	1,4	1,4	6,5	4,2	10 / 16
33706	35	32	14	10	1,8	1,5	6,9	4,3	10 / 16
33707	42	39	15	11	1,8	1,6	7,7	4,7	10 / 16
33708	54	51	16,5	12,5	1,8	1,8	8,7	5,2	10 / 16
33709	76,1	72,1	18,5	14,5	1,8	1,8	12,6	7,3	10 / 16
33710	88,9	84,9	20	16	1,8	2	14,3	8,3	10 / 16
33711	108	104	22	18	1,8	2	16,8	9,3	10 / 16

Geberit Mapress flange PN 10/16, with plain end



Application Purpose

- For sanitary and industrial applications
- For heating installations

Characteristics

- Plain end

Product Details

Product material	CrNiMo steel 1.4401 (DIN EN 10088)
------------------	------------------------------------

Scope Of Delivery

- Excluded: Set of bolts for flange
- Excluded: Flange gasket

Ordering Information

Article no.	dØ [mm]	diØ [mm]	D [cm]	k [cm]	m [cm]	H [cm]	h [cm]	n [ST]	PN [bar]
33728	54	54,5	16,5	12,5	1,8	8,7	1,8	4	10 / 16
33729	76,1	72,1	18,5	14,5	1,8	12,6	1,8	4	10 / 16
33730	88,9	84,9	20	16	1,8	14,3	2	8	10 / 16
33731	108	104	22	18	1,8	16,8	2	8	10 / 16

