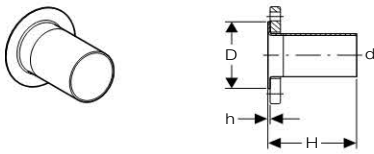


Flanges

Geberit Mapress flanged stub with plain end, for loose flange PN 10/16



Application Purpose

- For sanitary, heating and industrial purposes
- For loose flange

Characteristics

- Leaky if unpressed

Product Details

Product material	Cu-DHP copper CW024A (EN 1412)
------------------	--------------------------------

Scope Of Delivery

- Excluded: Loose flange
- Excluded: Set of bolts for flange
- Excluded: Flange gasket

Ordering Information

Article no.	dØ [mm]	D [cm]	H [cm]	h [cm]	PN [bar]
63710	66,7	12,2	14,2	0,2	10 / 16
63711	76,1	12,2	14,5	0,2	10 / 16
63712	88,9	13,8	15,2	0,2	10 / 16
63713	108	15,8	17,4	0,25	10 / 16

Closures

Geberit Mapress cap



Application Purpose

- For sanitary, heating and industrial purposes
- For long-lasting sealing of pipelines

Characteristics

- With pressing indicator

Product Details

Product material	Cu-DHP copper CW024A (EN 1412)
------------------	--------------------------------

Scope Of Delivery

- Seal ring
- CIIR black with dia. ≤ 54 mm; EPDM with dia. > 54 mm

Ordering Information

Article no.	dØ [mm]	L [cm]	Z [cm]
60231	12	2	0,3
60232	15	2,3	0,3
60233	18	2,3	0,3
60234	22	2,5	0,4
60235	28	2,7	0,4
60236	35	3	0,4
60237	42	3,4	0,4
60238	54	3,9	0,5
60239	66,7	5,9	0,9
60240	76,1	6,4	1,1
60241	88,9	7,1	1,1
60242	108	8,6	1,1

