

Geberit straight connector with screw connection



Product Details

Product material	PE
------------------	----

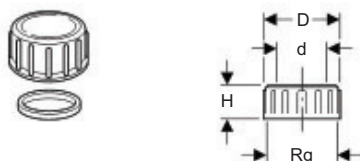
Scope Of Delivery

- Union nut
- Seal

Ordering Information

Article no.	dØ [mm]	G ["]	H [cm]	K [cm]	Colour
152.107.16.1	40	1 1/4	21	11	black
152.108.16.1	40	1 1/2	20	11	black
152.113.16.1	50	1 1/2	20	13	black
152.114.16.1	50	2	20	13	black
152.115.16.1	50	1 1/4	20	13	black

Geberit HDPE screw cap



Application Purpose

- For all drainage pipes

Product Details

Product material	PP
------------------	----

Scope Of Delivery

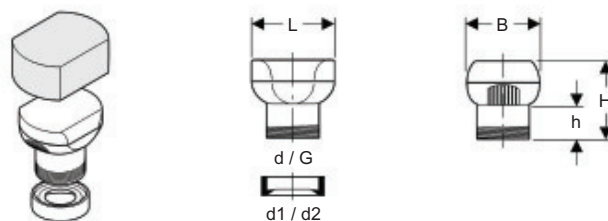
- Seal EPDM

Ordering Information

Article no.	dØ [mm]	Rg [mm/in]	D [cm]	H [cm]
379.781.16.1	32	44 x 1/8	5,6	2,6
360.781.16.1	40	52 x 1/6	6,4	3,3
361.781.16.1	50	62 x 1/6	7,4	3,3
363.781.16.1	56	70 x 1/6	8,5	3,5
364.781.16.1	63	75 x 1/6	9	4,2
365.781.16.1	75	95 x 1/6	11,2	4,5
366.781.16.1	90	110 x 1/4	12,9	5
367.781.16.1	110	130 x 1/4	14,9	6,5

Air admittance valves

Geberit air admittance valve, with thread and sleeve dia. 32 - 56 mm



Application Purpose

- For ventilation of waste water pipes
- For gravity waste water systems

Characteristics

- Male thread 1 1/2"

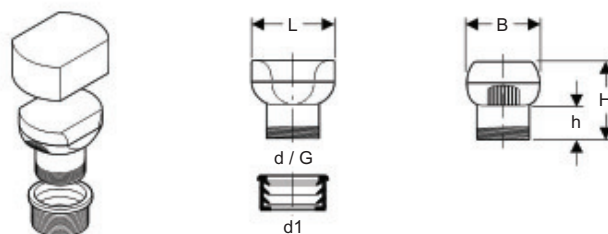
Scope Of Delivery

- Connection sleeve
- Frost protection cover

Ordering Information

Article no.	dØ [mm]	d1Ø [mm]	G ["]	d2Ø [mm]	B [cm]	H [cm]	h [cm]	L [cm]
303.900.00.1	50	32	1 1/2	40	7	7,3	3,5	8

Geberit air admittance valve, with thread and sleeve dia. 56 - 63 mm



Application Purpose

- For ventilation of waste water pipes
- For gravity waste water systems

Characteristics

- Male thread 1 1/2"

Scope Of Delivery

- Connection sleeve
- Frost protection cover

Ordering Information

Article no.	dØ [mm]	d1Ø [mm]	G ["]	B [cm]	H [cm]	h [cm]	L [cm]
305.900.00.1	50	57	1 1/2	7	7,3	3,5	8