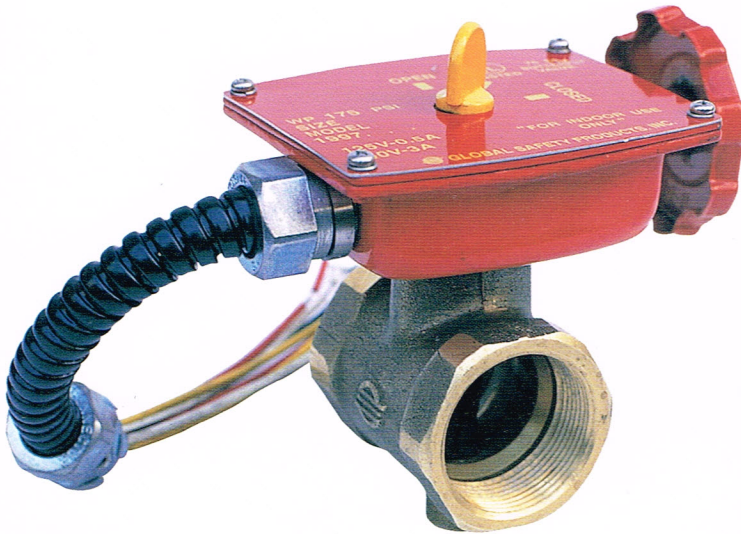


BB-T

Indoor Use Only

Bronze Butterfly Valve Grooved End Type

UL, ULC Listed and FM Approved



Specifications

Size : 1" Through 2 1/2"
Working Pressure : 175 PSI (12.5 Bars)
Max. Test Pressure : 350 PSI (25.0 Bars)
Working Temperature : 250 °F(120°C)
Factory Installed UL Approved Tampered Switch for Indoor Use Only

Materials

Body : Brass, Bronze
Disc : Brass, Ductile Iron, EPDM Encapsulated
Stem : Stainless Steel, Hardened & Tempered

Dimensions

(Unit : mm)

| Size | A | B | C | D | E | Weight(Kg) |
|--------|------|------|------|----|----|------------|
| 1" | 43.7 | 39.7 | 54 | 52 | 37 | 1.5 |
| 1-1/4" | 54 | 49 | 67 | 56 | 41 | 1.7 |
| 1-1/2" | 60 | 56 | 73 | 59 | 44 | 1.8 |
| 2" | 76 | 70 | 82.4 | 64 | 49 | 2.4 |
| 2-1/2" | 90 | 84 | 104 | 65 | 50 | 3.1 |

